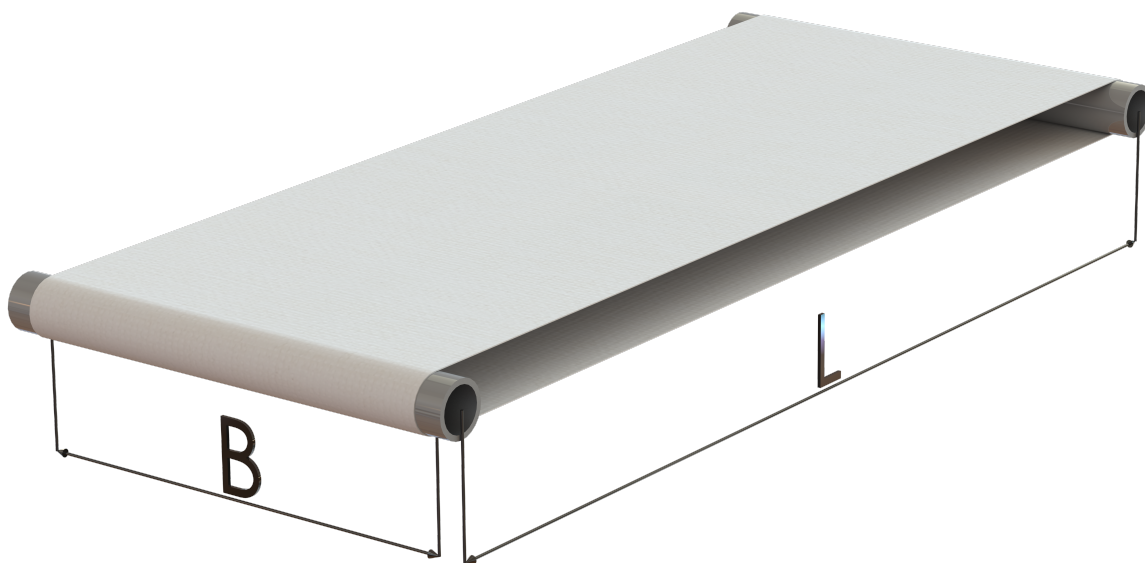


MEASUREMENT INSTRUCTION BELTS FOR DOUGH SHEETERS

A proper fit of the belt on your machine is important because it helps to prevent the belt from tilting or running off. Measuring the belt properly, is the first step for a good fit.



1. L. - The total circumference in millimeters

The most easy way to measure the circumference is to span a cord around the two rolls. The length of the cord represents the total circumference around the two rolls.

Note: Measure the circumference from roll to roll when the machine is set in the shortest position. After intensive use a belt can stretch a little, when measured in the shortest position there is still room to further divide the rolls.

2. B. - Width of the roll in millimeters

Measure from one end to the other end of the roll. This can simply be measured with a tape measure.

Note:

2.1 **Rollfix belts** always have longitudinal profiles on the running side. These profiles should run next to the roller to prevent the tire from becoming tilting or running off. You do not need to take this into account. Please specify the width of the roll as described above.